



Adresse / Address

Datum / Date

Kontakt / Contact

08/2014

Ledermann GmbH & Co. KG
Willi-Ledermann-Str. 1
D-72160 Horb a.N.

Tel. +49 (0) 74 51 / 93 - 0
info@leuco.com
www.leuco.com

Betreff / Subject

LEUCO SmartCNC: HSK-F63 Collet chucks with internal collet nut system from 2 to 20 mm, 470 E (ER 32)

Seite / Page

01/02

Inhalt / Content

The modern 5-axis technology proves its benefit with the appropriate accessories. LEUCO offers extra-long slim collet chucks for your 5-axis aggregates. This allows to reach areas on workpieces which are hard to access with standard cutters and drill bits. Expensive extra-large special tools are often no longer necessary.

The balance quality of G 2.5 allows high RPM up to 24,000 U/min and guarantees extremely smooth running of the tools and excellent surface quality. The necessary high clamping forces are reached thanks to the patented internal Zeta® safety profile. Thanks to the unique form fit of clamping key and clamping nut there is no danger of injury (slip off) for the operator during the clamping and unclamping process.

Machine / Application

- | CNC machines; 5-axis working centers
- | special moldings with deep cavities, i.e. manufacturing of stairs, chairs, etc.

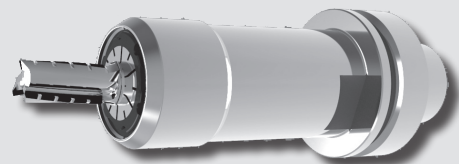
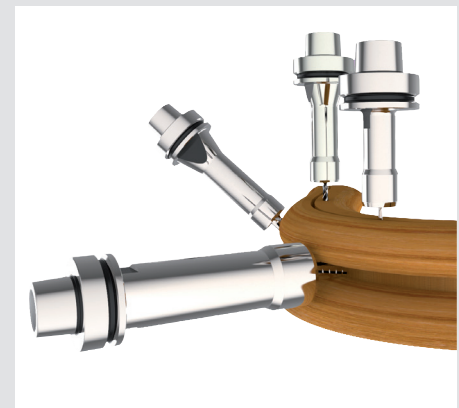
Design

- | hardened and polished
- | internal collet nut
- | for double-slotted collets
- | balanced 24,000 RPM
- | balance quality G 2.5

Advantages

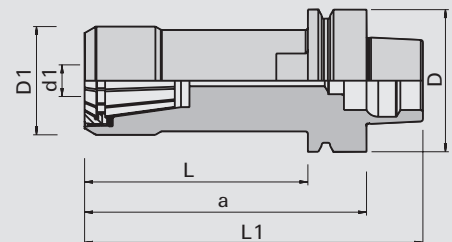
- | slim design
- | high clamping force

Bildmaterial / Imagery



HSK-F63 Collet chucks System 470 E (ER 32)

Ø d1min	Ø D1	Ø d	Ø D	L	L1	a	Ident-No.
2-20	48	HSK 63F	63	34	85	60	184851
2-20	48	HSK 63F	63	44	95	70	184852 o
2-20	48	HSK 63F	63	89	140	115	184853
2-20	48	HSK 63F	63	99	150	125	184854
2-20	48	HSK 63F	63	124	175	150	184855 o
2-20	48	HSK 63F	63	154	205	180	184856 o
2-20	48	HSK 63F	63	174	225	200	184857
[mm]	[mm]	[mm]	[mm]	[mm]	[mm]	[mm]	



*The draw-in collet chucks are also available for collet chucks 426 E (ER 16) see folder 839461 and 462 E (OZ 25) see folder 839463

LEUCO

www.leuco.com



Adresse / Address

Datum / Date

Kontakt / Contact

08/2014

Ledermann GmbH & Co. KG
Willi-Ledermann-Str. 1
D-72160 Horb a.N.

Tel. +49 (0) 74 51 / 93 - 0
info@leuco.com
www.leuco.com

Betreff / Subject

Seite / Page

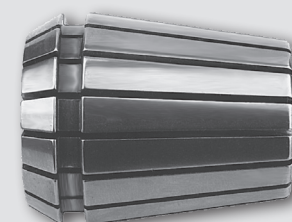
LEUCO SmartCNC: HSK-F63 Collet chucks with internal collet nut system from 2 to 20 mm, 470 E (ER 32)

02/02

Inhalt / Content

Bildmaterial / Imagery

Collet chucks System 470 E (ER 32)



Ø D	Ø d1min	Ø d1min	L1	type	Ident-No.	
33	3		40	470 E	173647	o
33	4		40	470 E	173648	o
33	5		40	470 E	173649	o
33	6		40	470 E	173650	o
33	7		40	470 E	173651	o
33	8		40	470 E	173652	
33	10		40	470 E	173653	
33	12		40	470 E	173654	
33	13		40	470 E	173655	o
33	14		40	470 E	173656	o
33	16		40	470 E	173657	
33	18		40	470 E	173658	o
33	19		40	470 E	173659	o
33	20		40	470 E	173660	
33		1/4	40	470 E	175829	
33		1/2	40	470 E	175830	
33		5/8	40	470 E	175831	o
33		3/4	40	470 E	175832	o
[mm]	[mm]	[zoll]	[mm]			

[a]



[b]



[c]



[d]



[e]



Accessories / Mounting Devices / Spare parts

Product	For type	Ident-No.
[a] Collet nut	470E / ER 32	184876
[b] Hand spanner	470E / ER 32	184879
[c] Screw-in aid	470E / ER 32	184882
[d] Torque nut	470E / ER 32	184885
[e] Torque adapter	470E / ER 32	184888
Torque wrench 20-200Nm	470E / ER 32	184890

no marking – immediately available
8 – modification and/or mounting of stock parts

o – available on short notice
s – production per drawing(custom made tool)

– new type in process
\$ – Superstandard

LEUCO

www.leuco.com